



anseme

SeedProduction



We produce
high-quality seeds and
we let them go around the world
doing their business with success.

a world of seeds

Anseme is based in Cesena (FC), in the heart of Romagna. The head-office is easy to reach from the **A14** motorway, the **E45** express-way and the **via Emilia**, the major routes crossing the region Romagna.



RAVENNA

CESENA

BOLOGNA

PESARO

ANCONA

MACERATA

ASCOLI P.

ANSEME SeedProduction

Known throughout the world, ANSEME is one of Italy's leading companies in the seed production sector. The company was founded in 1952 and from 1977 is being managed by the Urbini family.

With slight annual variations, ANSEME cultivates its seeds with 1500 growers, on a total area of 2500 hectares of land. Each season production consists in about 3000 tons of hybrid and standard vegetable seeds, which the company exports to more than 50 different Countries. ANSEME grows every year more than 300 different varieties and we are working hard to keep seed purity and improve quality year after year.



ANSEME grows its seeds in several Italian regions: Lombardia, Piemonte, Umbria, Abruzzo and Puglia. Most of our production however is concentrated on the wide plains of Emilia-Romagna extremely suitable for direct sowing and mechanised farming techniques – and the windy, sunny hills of the Marche, south of Emilia-Romagna, ideal for the production of hybrid onions and hybrid cabbages. This is an area known and envied by seed producers all over the world.

We are equipped with modern and efficient machinery. We have eight lines, divided according to types of product, special processing and finishing. This gives us the possibility of wide-ranging fast selection and enables to process both large and small quantities, ensuring 99% mechanical purity and preventing any mixture of different varieties of seeds. Our machine operators benefit from the professional experience, which has been handed down from one generation to the next within the company. This fifty-year experience combines tradition with the most sophisticated technology.



Multiplication list biannual

VARIETY	SYSTEM	MIN. Ha.	YIELD Kg x Ha.	Stock Seed kg x Ha.	SOWING Time	GER. %	PUR. %	HARVEST Time	DELIVERY Time
HYBRID ONION	Transplanting	0,5	400	1,5	February	80	99	August next year	September next year
ONION	Transplanting	0,5	600	1,5	February	80	99	August next year	September next year
HYBRID BUNCHING ONION	Transplanting	0,5	350	2	April	85	99	August next year	September next year
BUNCHING ONION SINGLE STEM	Transplanting	0,5	400	2,5	April	85	99	August next year	September next year
BUNCHING ONION MULTI STEM	Transplanting	0,5	700	2,5	April	85	99	August next year	September next year
CHINESE LEEK	Seed to Seed	1	800	4	March	80	99	October next year	November next year
HYBRIB CABBAGE	Transplanting	0,3	600	0,3	July	85	99	July next year	August next year
CABBAGE OP	Trasplanting	0,5	1.000	0,5	July	85	99	August next year	September next year
HYBRID CARROT	Transplanting	0,5	400	0,8	August	80	99	August next year	September next year
CARROT OP	Seed to Seed	1	600	3	August	80	99	August next year	September next year
BEET ROOT	Transplanting	1	1.500	3	August	85	99	July next year	August next year
SPINACH	Seed to Seed	1	1.000	4	October	80	99	July next year	August next year
CELERY	Transplanting	0,5	600	0,3	August	80	99	August next year	September next year
HYBRID CHINESE CABBAGE	Transplanting	0,5	700	0,6	September	85	99	July next year	August next year
CHINESE CABBAGE OP	Seed to Seed	1	1.000	2	September	85	99	July next year	August next year
HYBRID PAK CHOY	Transplanting	0,5	700	0,6	September	85	99	July next year	August next year
PAK CHOY OP	Seed to Seed	1	1.000	2	September	85	99	July next year	August next year
CHINESE MUSTARD OP	Seed to Seed	1	1.000	2	September	85	99	July next year	August next year

Multiplication list annual

VARIETY	SYSTEM	MIN. Ha.	YIELD Kg x Ha.	Stock Seed kg x Ha.	SOWING Time	GER. %	PUR. %	HARVEST Time	DELIVERY Time
RADISH OP	Seed to Seed	1,0	1.000	3	March	85	99	July	August
HYBRID RADISH	Seed to Seed	0,5	700	2,5	March	85	99	July	August
PEAS	Seed to Seed	1,0	2.500	200	March	85	99	July	August
CORIANDER	Seed to Seed	1,0	1.500	10	March	85	99	August	September
LETTUCE	Seed to Seed	1,0	500	1	March	85	99	August	September
HYB. CHINESE CABBAGE	Transplanting	0,5	700	0,6	March	85	99	July	August
CHINESE CABBAGE OP	Seed to Seed	1,0	1.000	2	March	85	99	July	August
CHINESE MUSTARD	Seed to Seed	1,0	1.000	2	March	85	99	July	August
HYBRID CUCUMBER	Seed to Seed	0,5	400	3	April	85	99	July	August
CUCUMBER	Seed to Seed	1,0	400	4	April	85	99	September	October
HYBRID PAK CHOY	Transplanting	0,5	700	0,6	March	85	99	July	August
PAK CHOY OP	Seed to Seed	1,0	1.000	2	March	85	99	July	August
CHRYSANTHEMUM	Seed to Seed	1,0	1.200	4	March	85	99	July	August
ENDIVIE - ESCAROLE	Seed to Seed	1,0	800	2	February	85	99	August	September
SPINACH	Seed to Seed	1	1.000	4	February	80	99	July	August

We work also on multiplication contract and we are very specialised in hybrid seed multiplication, but we also commercialise a large range of OP varieties that we produce on our stock seeds and that we can offer on spot basis (in particular we are very strong in Mediterranean varieties)

Our main purpose is the production of good quality seed with high germinations and to reach this goal we're keeping on working hard to improve our know-how and to contact the best farmers.

We've been currently producing about Ha 2.500 of vegetable seed (Ha 1.800 O.P. and Ha 700 hybrid) for over 200 companies from 20 countries all over the world. Our successful results are due to the following factors:

- 1) Production area
- 2) Technicians' experience
- 3) Flexibility of our productions
- 4) Good seed quality/Competitive prices

Our technical staff (12 people working in the production dept:) has a long experience in particular in hybrid seed production and thanks to their excellent know-how, they can grow even difficult items like Hyb. Cabbage and Onion.

Artichoke (*Cynara scolymus*)

Code	Variety	Description
1886	PURPLE OF ROMAGNA	Very early; medium sized, elongated, purple heads; fleshy and tender leaves.

Asparagus (*Asparagus officinalis*)

Code	Variety	Description
4285	ARGENTUIL	Very early. Big spears with round top and purple scales.



1886



4285



4062



4059



4058



4055



4057

Basil (*Ocimum Basilicum*)

Code	Variety	Description
4059	FINE VERDE	Dwarf plant with very small, bright green leaves. Intense perfume.
4057	PALLA COMPATTO	Small leaved, compact plant, which can also be grown in vase as ornamental plant.
4060	SWEET BASIL LARGE LEAF	Large, aromatic leaves of dark green colour.
4055	ITALIANO CLASSICO sel. AURELIO	Large, spoon-shaped, aromatic leaves of bright green colour without mint flavour. (Genovese type).
4062	LETTUCE LEAF NAPOLETANO	Vigorous plant 40-50 cm high with very large, light green and aromatic leaves.
4058	PURPLE OPAL	Dark purple, slightly blistering and aromatic leaves.

Beans - Bush green pod (*Phaseolus vulgaris*)

Code	Variety	Maturity	Size cm	Cross section	Colour	Seed colour
4089	CONTENDER	Early	17	Round	Medium green	Buff light-brown
4082	SLENDERETTE	Medium	17	Round	Dark green	White

Beans - Bush wax pod (*Phaseolus vulgaris*)

Code	Variety	Maturity	Size cm	Cross section	Colour	Seed colour
4100	BURRO DI ROQUENCOURT	Early	18	Round	Dark golden yellow	Black
4107	BRITTLE WAX	Early	15	Round	Golden yellow	White with brown eye
4114	BERGOLD	Early	15	Round	Golden yellow	White

Beans - Bush snap bean (*Phaseolus vulgaris*)

Code	Variety	Maturity	Size cm	Cross section	Colour	Seed colour
4110	BORLOTTO LINGUA DI FUOCO sel. ETTORE	Medium late	13	Near round	Buff with red stripes	Light green with red stripes
4170	CANNELLINO LINGOT	Medium late	15	Oval	Medium green	White



4082



4089



4100



4110



4170

Beans - Pole green pod (*Phaseolus vulgaris*)

Code	Variety	Maturity	Size cm	Cross section	Colour	Seed colour
4125	BLUE LAKE	Medium-early	14	Round	Medium green	White
4150	SUPERMARCONI	Late	21	Broad flattened	Light green	Black

Beans - Pole wax pod (*Phaseolus vulgaris*)

Code	Variety	Maturity	Size cm	Cross section	Colour	Seed colour
4160	WONDER OF VENICE	Late	18	Broad flattened	Medium yellow	Black

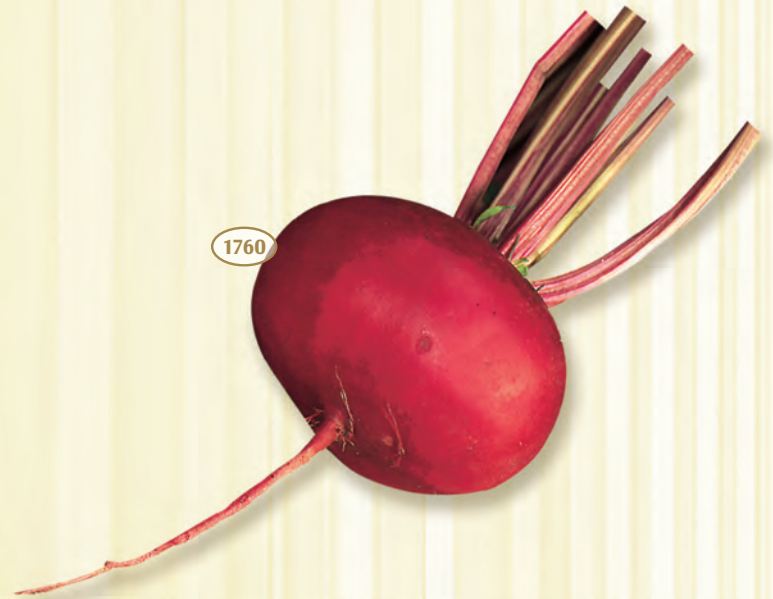
Beans - Pole snap bean (*Phaseolus vulgaris*)

Code	Variety	Maturity	Size cm	Cross section	Colour	Seed colour
4140	BORLOTTO LINGUA DI FUOCO sel. ERCOLE	Medium late	14	Near round	Buff with red stripes	Light green with red stripes

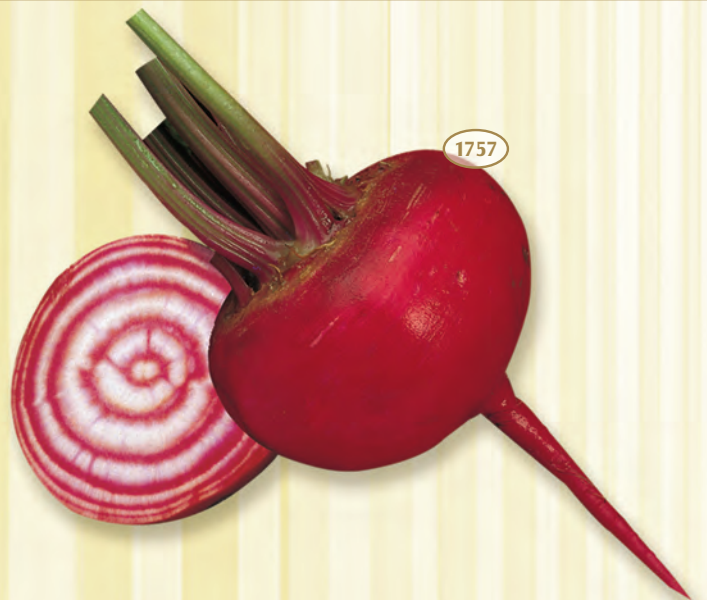


Red beet (*Beta vulgaris conditiva*)

Code	Variety	Maturity	Shape	Skin	Colour	Internal colour
1755	DETROIT 2 sel. IRIDE	Medium early	Round	Smooth	Dark red	Dark red
1760	FLAT OF EGYPT sel. OSIRIDE	Very early	Flat round	Smooth	Purple red	Purple red



1757	TONDA DI CHIOGGIA	Very early	Round	Smooth	Light red	Light rose veined
1756	CYLINDRA	Very early	Cylindrical	Smooth	Dark red	Dark red
1763	RUBY QUEEN	Early	Round	Smooth	Deep red	Deep red



Broad bean (*Vicia faba*)

Code	Variety	Description
4221	SUPERAGUADULCE sel. SMERALDA	This is our selection of Superaguadulce. Medium late, highly productive variety. 35-38 cm long, bright green pods with 8-9 seeds.
4222	AGUADULCE SUPERSIMONIA	Medium late, highly productive variety. Sabre shaped, 35 cm long pods with 8-9 seeds.
4226	EXTRA-EARLY PURPLE SEED NEGRETA	Extra early variety. 25-26 cm. long pods with 6-7 dark green seeds, which get bright green coloured after full maturity.
4225	EXTRA-EARLY WHITE SEED PRIMARENCA	Extra-early, short day variety with white seed. 25-26 cm. long, double pods with 6-7 seeds.



4221



4225



4226



4222

Broccoli (*Brassica oleracea cymosa*)

Code	Variety	Description
1351	GREEN SPROUTING CALABRESE sel. ANGRI	Mid-early maturity; medium tall plant with a large sideshot production; green, medium sized central head.
2535	BROCCOLO ROMANESCO EARLY sel. CAMPIDOGLIO	Early variety; plant with a long, big stem; light green, big central head.

Brussel sprouts (*Brassica oleracea gemmifera*)

Code	Variety	Description
1375	MEZZO NANO	Dark green leaved plant; large production of medium sized sprouts.

Cabbage (*Brassica oleracea capitata*)

Code	Variety	Maturity	Stem	Colour	Shape	Weight kg.
1350	BRUNSWICK sel. GORDON	Medium late	short	Green	Flat	4/5
1352	COPENHAGEN MARKET sel. CROTON	Early	Short	Green	Round	2-2,5
1356	GLORY OF ENKHUIZEN	Medium late	Short	Grey-green	Round	4-4,5
1368	AMAGER	Late	Medium	Dark-green	Round	2-2,50
1354	CUOR DI BUE GROSSO	Medium-late	Medium	Green	Heart-shaped	2-2,50
1359	GOLDEN ACRE	Very early	Short	Green	Round	1,5-2
1360	CABEZA NEGRA 3 sel. NIGER	Medium-early	Short	Red	Round	2-2,50

Curly kale (*Brassica oleracea acephala*)

Code	Variety	Description
1364	NERO DI TOSCANA	Tight, long and blistering leaves of dark green colour.



Savoy cabbage (*Brassica olerace sabauda*)

Code	Variety	Maturity	Stem	Colour	Shape	Weight kg.
1363	SAVOY VERTUS sel. REY	Medium late	Medium	Greyish-green	Flat-round	2-3
1367	VERZA DI VERONA	Medium	Medium	Greyish-green with a tinge of red	Flat-round	2-3

Kohlrabi (*Brassica olerace acephala gongylodes*)

Code	Variety	Relative days to maturity	Shape	Size	Colour
1370	WHITE VIENNA	50-55	Globe	5-7 cm.	Greenish white
1371	PURPLE VIENNA	50-55	Globe	5-7 cm.	Purple

Chinese cabbage (*Brassica pekinensis*)

Code	Variety	Relative days to maturity	Shape	Weight kg	Colour
1358	CHINESE MICHIHILI	70-75	Cylindrical	2-2,5	Dark green



Cauliflower (*Brassica oleracea botrytis*)

Code	Variety	Relative days to maturity	Growing habit	Colour	Weight kg	Leaf cover
2500	SNOWBALL Y	75-80	Medium	White	0,9-1,2	Good
2531	GREEN MACERATA	85-100	Vigorous	Light green	1,0-1,3	Poor
2538	PURPLE OF SICILY	110-120	Medium	Purple	1,3	Poor
2542	GIANT OF NAPLES NATALINO	180	Vigorous	White	1,3-1,6	Very good
2539	GIANT OF NAPLES MARZATICO	250	Vigorous	White	1,5-1,8	Good



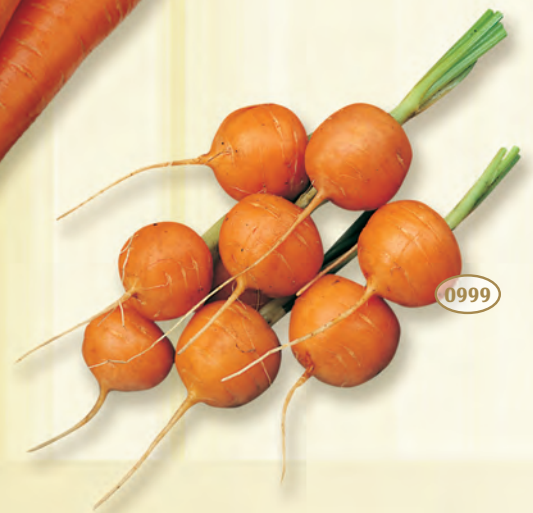
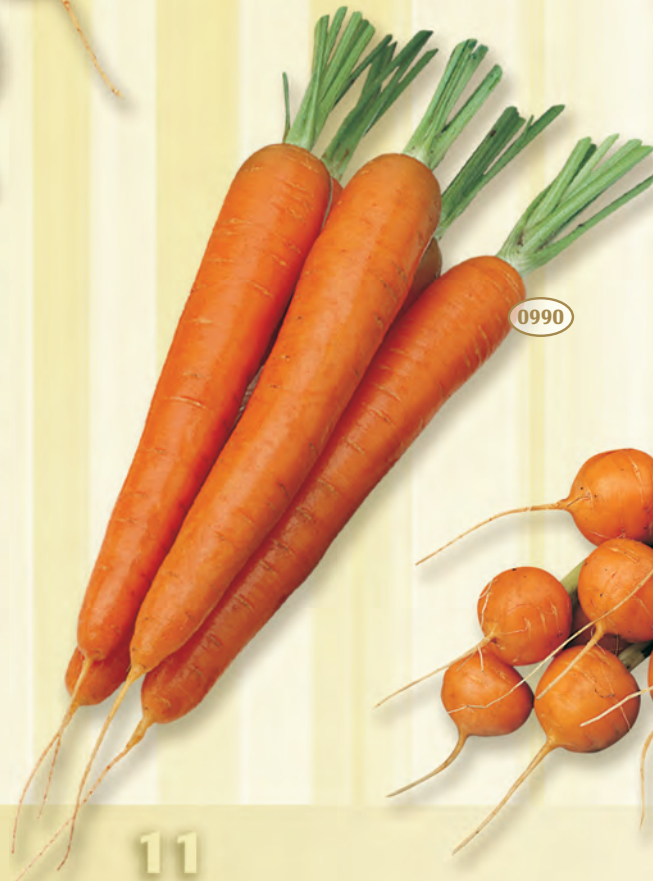
Cardoon (*Cynara cardunculus*)

Code	Variety	Description
1891	BIANCO AVORIO	Light green, finely incised, smooth leaves; white, large and fleshy ribs.
1895	LARGE SMOOTH GOBBO DI NIZZA	Broad, little notched leaves without spines. Very broad, white and fleshy ribs.



Carrot (*Daucus carota*)

Code	Variety	Maturity	Foliage	Length cm.	Shape	Colour
975	NANTES 2	Medium early	Vigorous	15-17	Cylindrical	Dark red-orange
979	BERLICUM 2 sel. ETNA	Late	Vigorous	21-23	Conical	Dark red-orange
981	CHANTENAY 2 sel. STARK	Medium early	Vigorous	14	Conical	Deep orange
984	ST. VALERY	Late	Strong	25-27	Conical	Deep orange
990	DE COLMAR (FLAKKEE 2 sel. FRANCY)	Late	Strong	25-27	Conical	Deep orange
986	NEW KURODA	Early	Medium	12-15	Conical	Deep orange
995	AMSTERDAM 2	Early	Vigorous	14-16	Cylindrical	Orange
999	TONDA DI PARIGI	Very early	Vigorous	5	Globe	Red-orange



Celery (*Apium graveolens*)

Code	Variety	Growing habit	Foliage	Stalk
2801	WHITE PASCAL sel. RIMINI	Medium tall, erect	Light green	Thick, light green
2802	GOLDEN SELF BLANCHING sel. PALIO	Vigorous, very tall	Yellow green	Thick, golden yellow
2803	D'ELNE sel. BINGO	Medium tall, erect	Dark green	Green, round and fleshy
2805	TALL UTAH 52-70	Medium tall, erect	Dark green	Thick, light green
2808	VERDE DA TAGLIO	Medium tall	Green	Thin
2811	VENTURA	Medium tall, erect	Light green	Thick, light green



Celeriac (*Apium graveolens*)

Code	Variety	Description
2806	GIANT PRAGUE	Big sized, round rooted variety with white and tender flesh.

Coriander (*Coriandrum sativum*)

Code	Variety	Description
5609	CORIANDER Cilantro - Xiang Cai	A vigorous and fast growing variety, with large stems and thick leaves. Slow bolting, it performs well in mild and subtropical climates.

Chicory (*Cichorium intybus*)

Code	Variety	Leaf colour	Leaf shape	Head shape	Size
71	PALLA ROSSA PRECOCE sel. ARIES	Light red	Concave, wrapping	Round with white and crisp ribs	Small
74	PALLA ROSSA SEMI-PRECOCE sel. RITA	Bright red	Concave, wrapping	Round with white and crisp ribs	Medium
73	PALLA ROSSA TARDIVA sel. FANNY	Dark red	Concave, wrapping	Round with white, marked and crisp ribs	Large
88	ROSSA DI VERONA sel. AIDA	Bright red	Rounded	Round with wide white ribs	Small
89	ROSSA DI VERONA A PALLA sel. DRAGON	Dark red	Round, concave	Round with white ribs	Medium
91	ROSSA DI TREVISO PRECOCE	Wine red	Tight, long	Long with wide, white ribs	Medium
90	ROSSA DI TREVISO TARDIVA sel. AEREOS	Wine red	Tight, long	Long with large, crisp, white ribs	Small
85	VARIEGATA DI CASTELFRANCO sel. LIBRA	Creamy with red stains	Rounded	Long with marked rib	Medium
86	VARIEGATA DI LUSIA sel. IVAN	Creamy with rose stains	Rounded	Round with white, crisp rib	Medium-large
90	VARIEGATA DI CHIOGGIA sel. RUBIUS	Deep red	Round, large	Round with large rib	Large



Chicory (*Cichorium intybus*)

Code	Variety	Description
13	BARBA DI CAPPUCCINO	Upright variety with long, notched, medium green coloured leaves.
14	SELVATICA DA CAMPO STRISCIANTE sel. RUSTICA	Creeping variety; its leaves are long, lanceolate, notched, dark green and red shaded. Thick, white-reddish ribs; very resistant.
26	WILD CHICORY WHITE STEM	Creeping variety with long, notched, green coloured leaves with white ribs.
24	WILD CHICORY RED STEM (AGRIO)	Creeping variety with long, notched, green coloured leaves with red ribs.
4	BIANCA DI MILANO sel. REINA	Large and wrapping, light green leaves with marked venations which create an elongated head.
5	PAN DI ZUCCHERO sel. DUOMO	Large, voluminous and firm head with large and wrapping, light green leaves.
10	GRUMOLO VERDE SCURO sel. DORIS	Rosette head with rounded, thick, dark-green leaves.
57	GRUMOLO BIONDO sel. GOLDEN	Rosette head with rounded, thick, blond leaves.
55	DOUBLE BLOND IMPROVED	Voluminous head with large, rounded, blond leaves.
11	SPADONA VERDE sel. VERNA	Upright plant with long, narrow, bright green leaves with fine ribs.
25	IMERO (DOLCE GRECO)	Upright plant with long, narrow, bright green leaves.
12	SPADONA BIONDA	Upright plant with long, narrow, blond leaves.
60	ZUCCHERINA DI TRIESTE sel. DENSITY	Our very early, upright, fast growing selection with large and rounded leaves making a rosette. Ribs and venations are not very marked.



Chicory (*Cichorium intybus*)

Code	Variety	Description
63	MANTOVANA O CAPPOTTA sel. ICE	Large, rounded, light green leaves, making an oval head.
31	RADICE DI SONCINO	Semi-open growing with long leaves. Long, cylindrical root with white and tender flesh.
30	DI BRUXELLES - WITLOOF sel. PERLITA	Cylindrical-conic head with very large and firm ribs. By forcing, a white-yellow, good tasting bud comes out.
20	CATALOGNA GIGANTE DI CHIOGGIA sel. LAGUNA	Voluminous head, long, upright, serrate, dark green leaves. Very marked and fleshy leaves. Early cycle.
21	CATALOGNA A FOGLIA FRASTAGLIATA sel. ISCHIA	Upright head with long and serrate, medium green leaves with white ribs.



Code	Variety	Description
27	CATALOGNA DI GALATINA sel. MURGE	Medium-late cycle, long notched, dark-green leaves; white, well marked ribs; voluminous head with short, large, very close shoots on the base, making a firm pine.
23	CATALOGNA A STELO ROSSO	Upright head with serrate, medium green leaves with red ribs.
22	CATALOGNA PUNTARELLE A FOGLIA STRETTA	Upright, very firm head with long, narrow, medium green leaves.



Cima di Rapa (*Brassica rapa cymosa*)

Code	Variety	Description
1851	QUARANTINA	
1855	SESSANTINA	Dark green leaf, vigorous, very branched plant with erect growing. The inflorescence and the most tender leaves are used. (Maturity makes them different).
1860	NOVANTINA	
1862	RICCIA SAN MARZANO QUARANTINA	
1852	RICCIA SAN MARZANO CINQUANTINA	
1858	RICCIA SAN MARZANO SESSANTINA	Dark green leaves, vigorous, very branched plant with erect growing. The inflorescence and the most tender leaves are used. The varieties Riccia S. Marzano stand out because of the uniformity and beauty of their inflorescence over the foliage.(Maturity makes them different).
1863	RICCIA SAN MARZANO NOVANTINA	
1866	RICCIA SAN MARZANO CENTOVENTINA	
1861	NABI A	Used for leaf production. Leaf are big and of good quality.



Corn salad (*Valerianella locusta*)

Code	Variety	Maturity	Plant	Shape	Colour
3122	LARGE LEAVED	Mid-early	Full head	Erect, round	Deep green

Cucumber (*Cucumis sativus*)

Code	Variety	Maturity	Spines	Length cm.	Colour
182	MARKETMORE 70	Medium-early	White	20-21	Dark green
185	WHITE WONDER	Early	White	18-20	Creamy white
176	PARISIAN PICKLING	Early	Black	8-10	Light green



Dill (*Lepidium sativum*)

Code	Variety	Description
4021	PLAIN	Rapid growing, very productive; rather large, smooth leaves.



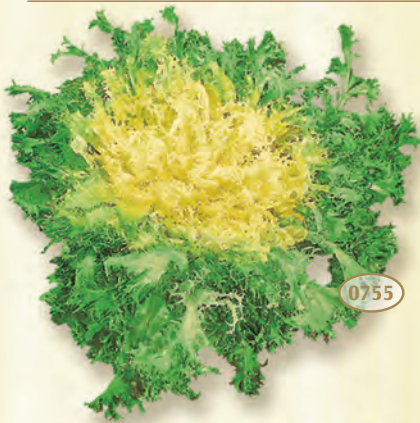
Egg plant (*Solanum melongena*)

Code	Variety	Maturity	Shape	Length cm.	Colour
4301	EARLY LONG PURPLE	Mid-early	Cylindrical, elongated	20-22	Dark glossy violet
4302	BLACK BEAUTY	Mid-early	Oval to globe	10-12	Dark glossy violet



Endive (*Chicorium endivia*)

Code	Variety	Head	Head colour	Leaf shape	Leaf colour	Rib colour
755	PANCALIERI WITH WHITE RIBS sel. GRADO	Broad	White	Very notched	Dark green	White
758	MOSS CURLED sel. MIDAS	Voluminous, semi erect	Light yellow	Very notched	Bright green	White
760	DI RUFFEC	Broad, semi erect	White	Very notched	Plain green	White
752	ROMANESCA sel. CRISTINA	Erect, to be cut	Green	Notched	Dark green	Green
780	BROAD BATAVIAN FULL HEART sel. METAPONTO	Voluminous, semi-erect	Golden white	Elongated, wide, wavy	Green	White
793	BLONDE FULL HEART sel. MEGA	Short, wide	Golden yellow	Broad, elongated, wavy	Pale yellow	White
790	GIGANTE DEGLI ORTOLANI	Voluminous, erect	Golden yellow	Round, elongated	Medium green	White
775	CORNET DE BORDEAUX sel. TULIP	Vigorous, erect	Yellow-green	Wrapping, elongated	Light green	Light green
759	BUBIKOPF	Voluminous, semi-erect	Creamy, white	Broad, round, elongated	Green	Green



Fennel (*Foeniculum vulgare*)

Code	Variety	Maturity	Fruit	Weight gr.	Tolerance to early flowering
371	MANTOVANO sel. ORFEO	Early	Flattened	300-500	Low
374	WADENROMEN sel. TITANIC	Mid-early	Big, round-oval	500-1000	High
375	ROMANESCO sel. LEONE	Late	Very big, round	500-1000	High



Leek (*Allium porrum*)

Code	Variety	Maturity	Leaf colour	Stem shape	Size
2331	CARENTAN 2	Mid-late	Blu-green	Short with large base	Large
2351	WINTER GIANT 2 sel. EIFEL	Late	Blu-green	Cylindrical	Thin
2350	BULGARIAN GIANT	Mid-early	Light green	Cylindrical, very long	Thin
2369	LUNGO D ESTATE	Early	Yellow-green	Cylindrical	Thin



Herbs

1991 *Lepidium sativum*



5608 *Anthriscum cerefolium*



5606 *Matricaria chamomilla*



5629 *Lavanda officinalis*



5627 *Silene inflata*



5621 *Rheum undulatum*



5612 *Artemisia dracunculus*



5618 *Melissa officinalis*



5630 *Poterium sanguisorba*



5620 *Origanum vulgare*



5628 *Thymus vulgaris*



5626 *Levisticum officinalis*



5601 *Rumex acetosa*

Code	Variety	Description	M:	P:	D:	Cycle
5602	Anise <i>Pimpinella anisum</i>	Pretty white flowered plant. The leaves are used in salads, soup and sauces while liqueurs, bread and cakes can be flavoured with the seeds	90	45	20	A
5605	Borage <i>Borago officinalis</i>	Attractive plants with blue small edible flowers. Young leaves with cucumber taste are used in salads and soups.	70	15	30	A
5606	Chamomille <i>Matricaria chamomilla</i>	Small, aromatic, daisy-like flowers are used for tea.	90	30	30	A
5610	Caraway Comino o Carvi <i>Caru carvi</i>	Biennial plant, bearing finely cut leaves and umbels of white flowers. The tender leaves are used for soups.	380	60	15	B
5608	Chervil Cerfoglio comune <i>Anthriscum cerefolium</i>	Light green and lacy leaves with delicate aniseed flavour. Used in Sprig salads and soups.	60	60	15	A
5613	Chive Erba Cipollina <i>Allium schoenoprasum</i>	The most delicate member of onion family, chopped leaves give a hint of onion flavour to salads and soups.	120	30	20	A/P
1991	Cress Crescione <i>Lepidium sativum</i>	Peppery flavoured leaves are used for salads.	120	15	20	A/P
5611	Dandelion Tarassaco o Dente di Leone <i>Taraxacum officinale</i>	Useful medicinal herb. Young leaves are used for salads.	50	15	20	A/P
4021	Dill Aneto <i>Anethum graveolens</i>	Feathery leaves have a flavour all its own. Excellent in sauces, salads and soups.	120	60	40	A
5616	Hyssop Isoppo <i>Hyssopus officinalis</i>	Plant with refreshing aromatic scent. Slightly bitter leaves are finely chopped in salads and soups.	120	50	40	P
5629	Lavander Lavanda <i>Lavandula officinalis</i>	Well-known garden plant with refreshing clean fragrance. Dried flowers can be used in pot-pourri.	60	50	40	P
5618	Lemon balm Melissa o Cedronella <i>Melissa officinalis</i>	Sweet lemon scented leaves used for teas and salads.	90	80	50	P
5626	Lovage Sedano di Monte <i>Levisticum officinalis</i>	Young leaves with taste of celery are used in spring salads and soups.	120	200	100	P
5617	Marjoram Maggiorana gentile <i>Origanum majorana</i>	A bushy plant with small, light green leaves. Aromatic leaves are often added to Mediterranean dishes.	90	40	30	P

A = Annual, B = Biennial, P = Perennial, M: Maturity in days from sowing, P: Plantlength in cm, D: Distance in cm

Herbs



5622
Rosmarinus officinalis

5613
Allium schoenoprasum

5611
Taraxacum officinale

5610
Carum carvi

5615
Foeniculum vulgare

5625
Santureja hortensis

5602
Pimpinella anisum

5604
Artemisia absinthium

5619
Mentha piperita

5624
Salvia officinalis

5623
Ruta graveolens

5616
Hyssopus officinalis

5617
Origanum majorana

5605
Borago officinalis

Code	Variety	Description	M:	P:	D:	Cycle
5620	Origanum Origanum vulgare	A hardy perennial herb with sweet smelling aromatic foliage. Often added to Italian dishes and pizza.	90	50	25	P
5619	Peppermint Mentha piperita	The essential oil of the plant is used as a flavouring. The dried leaves are used for tea.	90	60	40	A/P
5621	Rhubarb Rheum undulatum	Perennial plant producing long, thick, red stalks used for jam and conserve.	380	200	100	B/P
5622	Rosemary Rosmarinus officinalis	Perennial plant with flavoured narrow leaves and blue flowers.	380	150	100	P
5623	Ruel Ruta graveolens	A bushy plant with lacy blue-green leaves suitable for borders.	70	70	50	P
5624	Sage Salvia officinalis	Perennial plant with soft grey-green leaves. Its flavour is appreciated in cuisines throughout the world.	360	60	50	P
5630	Salad burnet Poterium sanguisorba	Attractive plants with small flavoured leaves used in salads, butter and garnish.	120	40	60	P
5625	Summer Savory Santureja hortensis	Annual plant with highly aromatic bright green leaves with peppery flavour.	90	40	30	P
5601	Sorrel Rumex acetosa	The lemony flavoured leaves are very rich in vitamin C. Young leaves can be used in salad or cooked like spinach.	90	100	80	P
5627	Stridolo Silene inflata	Italian vegetable, unknown in other countries. The tender leaves are used like spinach.	90	30	10	P
5612	Tarragon Artemisia dracunculus	Perennial plant with long pointed, dark green leaves. It is ideal for flavoured vinegars and oils.	60	70	35	P
5628	Thyme Thymus vulgaris	Low growing plant with delicate little pink flowers. Used in cooking in a wide range of dishes.	120	30	25	P
5615	Wild Fennel Foeniculum vulgare	Decorative plant with bright green feathery foliage and umbels of yellow flowers. Leaves and stalks flavour fish and meat.	120	100		A/P
5604	Wormwood Artemisia absinthium	Attractive plant with silvery grey foliage. Its oil is used to prepare alcoholic beverages.	90	70	35	P

A = Annual, B = Biennial, P = Perennial, M: Maturity in days from sowing, P: Plantlength in cm, D: Distance in cm

Leaf Lettuce (*Lactuca sativa*)

Code	Variety	Seed colour	Maturity	Plant shape	Leaf	Resistance to bolting
502	BIONDA FOGLIA LISCIA sel. BIC.	White	Very early	Flattened, spreading, round	Long, blond	Low
504	BIONDA FOGLIA RICCIA sel. GIULIANO	White	Very early	Erect, spreading	Curled, blond	Quite good
505	BIONDA FOGLIA DI QUERCIA sel. ERACLEA	Black	Very early	Flattened, spreading, round	Long, lobate, yellow-green	Low
506	AMERICANISCHER BRAUNER	White	Very early	Round, voluminous	Elongate, brown red	Quite good
518	GENTILINA	Black	Early	Tight, crisp	Friilled, blonde	Very high
521	GRAND RAPIDS	Black	Early	Tight, crisp	Friilled, blonde	Very high
556	SALAD BOWL	Black	Late	Large, spreading, voluminous	Long, lobate, blond	Very high
557	RED SALAD BOWL sel. LASER	Black	Mid-early	Large, spreading, voluminous	Oval, curled, red	High
519	LOLLO ROSSA	White	Medium	Spreading	Brown red, notched	Good
520	LOLLO BIONDA	Black	Early	Spreading	Lobate, light green	Good
569	CATALOGNA O CERBIATTA	Black	Early	Compact, crisp	Blistered, blond	Very good



Butterhead Lettuce (*Lactuca sativa*)

Code	Variety	Seed colour	Maturity	Plant shape	Leaf	Resistance to bolting
524	ATTRAZIONE (WHITE BOSTON) sel. GARDENA	White	Early	Medium, round	Smooth, blond	Medium
528	WINTER CROP sel. GIORGIA	White	Early	Large, compact	Wide, round, blond	Low
530	MAY KING sel. DANICA	White	Early	Medium-small	Round; smooth, light green rose shaded	Low



Code	Variety	Seed colour	Maturity	Plant shape	Leaf	Resistance to bolting
532	MARVEL 4 SEASONS sel. AMARANTA	Black	Early	Medium large, compact	Round, red-bronze	Low
552	WUNDER VON STUTTGART	Black	Mid-early	Large, compact	Rounded, green	Good
561	KAGRANER SOMMER sel. TORENIA	Black	Mid-early	Large, compact	Rounded, dark green	High
566	S. ANNA	Black	Mid-late	Large, compact	Rounded, dark green	Very-good
568	BLONDE PARESSEUSE	White	Medium	Large, compact	Yellow	High
526	BRAUNER TROTZKOPF	White	Early	Round, medium-large	Smooth, green, with red edge	Low
525	TROCADERO LA PREFERITA sel. ERIKA	Black	Early	Medium	Rounded, light green, red shaded	Low



Crisphead Lettuce (*Lactuca sativa*)

Code	Variety	Seed colour	Maturity	Plant shape	Leaf	Resistance to bolting
558	BATAVIA BIONDA DI PARIGI	White	Medium-late	Large, round	Blond, frilled edged	Good
564	BATAVIA PIERRE BENITE	White	Medium-late	Large, round	Blond, frilled edged	Good
559	BATAVIA BIONDA BORDO ROSSO 3 sel. MARINELLA	White	Medium-late	Large, round	Curled, blond with red frame	Good
560	BATAVIA DORATA DI PRIMAVERA	White	Medium-late	Voluminous, round	Blond, curled	Good
585	GRENOBLOISE	White	Medium-late	Large, round	Curled, dark red	Good
577	ICE QUEEN sel. TONALE	Black	Late	Medium large, compact	Notched, bright green	Good
590	GREAT LAKES 118	White	Late	Very big, compact	Wide, frilled, dark green	Very high
587	MERAVILLA DE VERANO	White	Late	Large, round	Large, green with red tinge	High



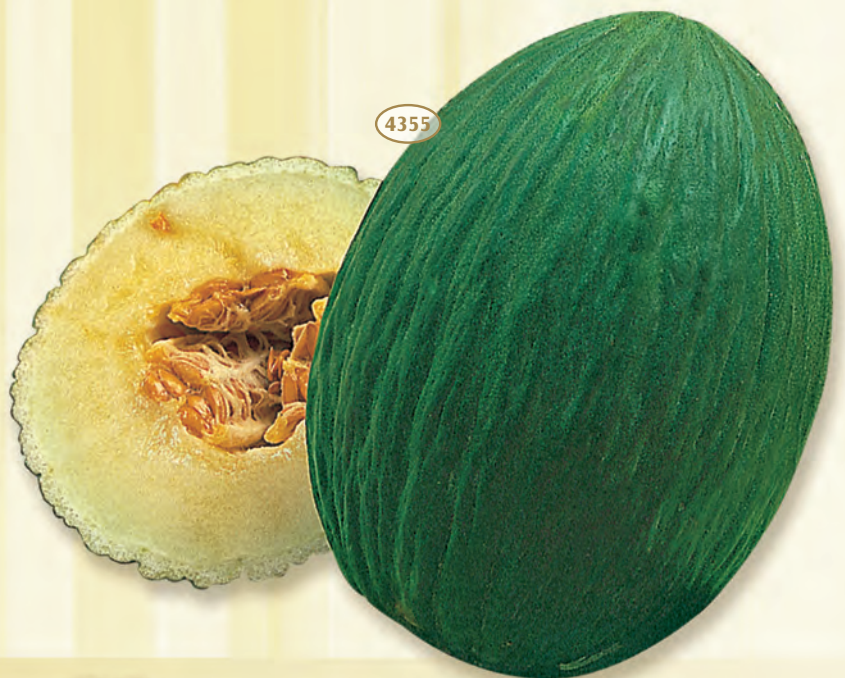
Romaine Cos Lettuce (*Lactuca sativa*)

Code	Variety	Seed colour	Maturity	Plant shape	Leaf	Resistance to bolting
533	PARRIS ISLAND COS sel. TEMPRA	White	Mid-early	Erect, voluminous, solid	Oval, elongated, deep green	Good
578	BIONDA LENTISSIMA A MONTARE sel. PAVONIA	Black	Mid-late	Erect, voluminous, solid	Blond, oval, long with marked ribs	High



Melon (*Cucumis melo*)

Code	Variety	Precocity	Fruit shape	Netting	Exterior colour	Internal colour
4351	CANTALUPO DI CHARENTAIS	Early	Round	Absent	Yellow	Orange
4352	RETATO DEGLI ORTOLANI	Mid-early	Oval	Present	Yellow-green	Orange
4354	AMARILLO ORO	Late	Oval	Absent	Golden yellow	White
4355	TENDRAL VERDE sel. BELLOBRUTTO	Very late	Oval	Absent	Deep green	White



Onion (*Allium cepa*)

Code	Variety	Daylength	Maturity	Colour	Shape	Size	Storage
1204	RED AMPOSTA	I	Late	Cooper red	Round	Large	Good
1218	BRUNSWICK	L	Medium late	Dark-red	Flat	Medium-large	Good
1219	FLAT OF ITALY	I	Early	Red-violet	Flat	Medium-large	Short
1208	RED OF FLORENCE	L	Mid-early	Violet, red	Top shaped	Large	Fair
1240	TROPEA ROSSA	I	Mid-late	Pink-red	Round	Medium-large	Medium
1239	ROSSA DI FIRENZE PERIFORME	I	Mid-early	Purple	Elongated	Medium	Short



1234	WHITE GLOBE OF JUNE	S	Mid-early	White	Round	Medium-large	Fair
1238	AGOSTANA	L	Mid-late	White	Round	Large	Medium
1241	BIANCA DI MAGGIO	S	Early	White	Flattened	Medium small	Short
1250	BIANCA DI GIUGNO sel. ALBA	S	Early	White	Flattened	Medium	Short
1233	WHITE LISBON	L	Mid-late	White	For bunching	Small	Summer-Autumn
1235	LISBON WINTER HARDY	L	Mid-late	White	For bunching	Small	Winter-Spring



Onion (*Allium cepa*)

		Daylength	Maturity	Colour	Shape	Size	Storage
1236	AVIV	S	Extra-early	White	Flattened	Small	Short
1246	BARLETTA	S	Early	White	Flattened	Small	Short
1244	POMPEI	S	Early	White	Globe-flattened	Small	Short
1245	EARLY POMPEI	S	Extra-early	White	Globe-flattened	Small	Short



1155	DENSITY	L	Late	Golden	Top-shaped	Large	Excellent
1150	YELLOW OF PARMA	L	Late	Golden	Top-shaped	Large	Excellent
1187	TEXAS GRANO 502	S	Mid-early	Yellow	Top-shaped	Medium	Medium
1152	VALENCIANA, EARLY	S	Early	Golden	Top-shaped	Medium	Short
1157	VALENCIANA, LATE	L	Late	Dark yellow	Round	Large	Good
1242	GOLD PRINCESS	S	Extra-early	Light yellow	Flat-round	Medium	Short
1171	STUTTGARTER RIESEN	L	Mid-early	Yellow	Flat	Large	Excellent
1183	VERTUS	L	Mid-early	Yellow	Flat	Large	Medium
1185	BORRETTANA	L	Late	Straw yellow	Flat	Small	Good
3145	BUNCHING ONION (<i>Allium fistulosum</i>)	Non-bulbing variety of single stem sort. Long stalk are white and with good taste. Heavy yielder with excellent taste.					





Parsley (*Petroselinum crispum*)

Code	Variety	Description
1251	PLAIN 2 sel. MADRAS	Aromatic, medium sized plant with medium, dark green, bright leaves.
1260	GIANT OF ITALY sel. OSCAR	Vigorous, aromatic plant with large, bright green leaves.
1270	MOSS CURLED 2	Highly productive and cold resistant plant with very curled leaves.
1271	HALBLANGE	Tap-rooted plant with white, very aromatic flesh.



Dwarf Peas (*Pisum sativum*)

Code	Variety	Seed type	Plant height	Pod colour	Pod length cm	Maturity
3815	KELVEDON WONDER	Wrinkled	45-55	Dark green	7-8	Mid-early
3816	AMERICAN WONDER	Wrinkled	35-40	Dark green	7-8	Mid-early
3819	PETIT PROVENÇAL	Smooth	40-45	Green	6-8	Early



3818	DOUCE DE PROVENCE (METEOR)	Smooth	40-45	Green	6-8	Early
3820	FELTHAM FIRST sel. SAVIO	Smooth	40-50	Light green	7-8	Early
3821	PROGRESS 9 sel. SERIO	Wrinkled	40-55	Dark green	8-10	Mid-early
3840	LINCOLN (CLIMAX)	Wrinkled	70-80	Dark green	8-10	Late





Half-climbing Peas (*Pisum sativum*)

Code	Variety	Seed type	Plant height	Pod colour	Pod length cm	Maturity
3822	RONDO	Wrinkled	80-90	Dark green	10-11	Late
3833	RONDO sel. ARGOS	Wrinkled	80-90	Dark green	10-12	Mid-late
3839	ONWARD	Wrinkled	80-90	Dark green	8-10	Late
3823	SENATORE sel. SATURNO	Wrinkled	110-120	Light green	7-9	Late
3851	S. CROCE	Smooth	90-100	Light green	10-12	Early





Climbing Peas (*Pisum sativum*)

Code	Variety	Seed type	Plant height	Pod colour	Pod length cm	Maturity
3870	ALDERMAN sel. TELSTAR	Wrinkled	160-180	Light green	10-12	Late
3868	CLIMBING TELEPHONE sel. RUNNER	Wrinkled	160-180	Light green	10-12	Late

Sugar Peas (*Pisum sativum*)

Code	Variety	Seed type	Plant height	Pod colour	Pod length cm	Maturity
3895	CAROUBY sel. SUGAR	Smooth	150-160	Light green	9-10	Late
3896	CORNE DE BELIER	Smooth	150	Light green	9-10	Late



Pepper (*Capsicum annuum*)

Code	Variety	Maturity	Shape	Lobe	Size	Flesh	Colour
3000	QUADRATO D'ASTI GIALLO	Mid-early	Square	4	10-11 x 12-13	Very Thick	Yellow
3001	QUADRATO D'ASTI ROSSO	Mid-early	Square	4	10-11 x 12-13	Very Thick	Red
3005	CORNO DI TORO ROSSO	Mid-early	Long, tapered	-	4-6 x 18-20	Medium thick	Red
3059	MARCONI ROSSO	Mid-early	Long, tapered	2-3	6 x 19	Medium thick	Red
3003	DE CAYENNE	Mid-early	Conic-elongated	-	1 x 10-12	Thin	Red
3064	TOPEPO	Mid-late	Flat, round	-	4 x 3	Thick, sweet	Red

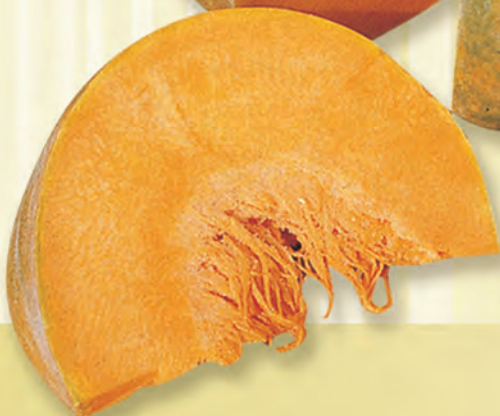
Pumpkin (*Cucurbita maxima/cucurbita moschata*)

Code	Variety	Description
4501	LUNGA DI NAPOLI	Cylindrical, round on the top fruits with medium-green skin and yellow-orange flesh.
4502	QUINTALE	Very big, yellow-orange fruits. Halloween pumpkin type.
4504	MARINA DI CHIOGGIA	Round to flattened fruits with bumpy, greysh-green skin and orange yellow flesh.
4505	VIOLINA - BUTTERNUT RUGOSA	Cylindrical, enlarged on the top fruits with wrinkled skin and orange flesh.
4506	FRIULANO RUGOSO	Pimpled, white yellow fruits with very good taste.
4509	BUTTERNUT LISCIA	Cylindrical, enlarged on the top fruits with smooth skin and orange flesh
4510	SERPENTE DI SICILIA	Cylindrical, long, arched, light green fruits



Pumpkin (*Cucurbita maxima/cucurbita muschata*)

Code	Variety	Description
4511	TROMBETTA D'ALBENGA	Small, funnel-shaped, dark yellow fruits.
4512	EARLY WHITE SCALLOP	Scallop shaped, creamy white fruits with very good taste.
4514	ROUGE VIF D'ETAMPE	Beautiful flattened and ribbed large fruits with deep orange skin.
4515	MUSCADE DE PROVENCE	Big, flat pumpkin, with brown colour skin and deep orange flesh, very fine flavoured.
4516	GIALLA DI PARIGI	The big pinkish-yellow fruits can grow over 40 kg. They are round, flattened and have light ribbing.
4518	AMERICANA TONDA	A beautiful, ornamental pumpkin that has deep orange skin with green stripes between the ribbing.



Radish-round varieties (*Raphanus sativus*)

Code	Variety	Maturity	Shape	Colour	Foliage	Ø cm.	Length cm.
639	SAXA sel. PERLA ROSSA	Extra-early	Round	Scarlet	Short	1,50-2	-
626	CHAMPION	Mid-late	Globe	Crimson	Short	1,50-2	-
621	CHERRY BELLE sel. GLOBO	Early	Globe	Bright red	Medium	2-2,50	-
630	CRIMSON GIANT sel. RUBINO	Mid-early	Globe	Red	Medium	4-5	-
629	GIANT OF SICILY sel. GIOIA	Mid-early	Globe	Red	Medium	4-5	-
641	SPARKLER	Mid-early	Globe	2/3 wine red 1/3 white	Medium	2-2,50	-
645	NATIONAL sel. PANDA	Early	Globe	Red with very small tip	Vigorous	2-2,5	-
653	TONDO ROSSO GRANDE PUNTA BIANCA sel. MUNGANO	Mid-early	Globe	1/3 red, 2/3 white	Medium	2-2,5	-
651	TONDO ROSSO SARDO A PUNTA BIANCA sel. CAMPIDANO	Late	Globe	Red with very small tip	Large	4-5	-



Radish-medium long varieties (*Raphanus sativus*)

Code	Variety	Maturity	Shape	Colour	Foliage	Ø cm.	Length cm.
649	18 GIORNI	Early	Cylindrical	4/5 red, 1/5 white	Short	2	4
642	FRENCH BREAKFAST 2	Early	Cylindrical	2/3 wine red, 1/3 white	Medium	2	5



Code	Variety	Maturity	Shape	Colour	Foliage	Ø cm.	Length cm.
637	LUNGO ROSSO SARDO PUNTA BIANCA	Late	Conic, elongated	Red with white tip	Large	3	15
644	LONG WHITE ICICLE sel. ALASKA	Early	Long, tapered	White	Medium	2	10



Winter Radish (*Raphanus sativus*)

Code	Variety	Description
638	MÜNCHNER BIER	Mid early, egg-shaped, white rooted, variety.
646	BLACK SPANISH ROUND	Very big, top-shaped, black root; black and coarse skin; white, compact, very pungent flesh.
650	OSTERGRÜSS ROSA	Very big, long, cylindrical-conic, rose root. Very early growing.
652	LUNGO NERO D'INVERNO	Long, cylindrical-conic, black root. Very pungent flesh.
698	LONG WHITE RADISH	Very long, cylindrical, white root. Early variety.



Rocket (*Eruca sativa* - *Diplotaxis tenuifolia*)

Code	Variety	Description
2881	CULTIVATED ROCKET	Slow bolting, notched leaved, flavoured plant. It grows quickly again after cutting.
2884	CULTIVATED ROCKET LARGE LEAF	Slow bolting, large, aromatic leaves. It grows quickly again after cutting.
2882	WILD ROCKET	Small covered plant, but very aromatic. Glabrous and very notched leaves. It grows quickly again after cutting.





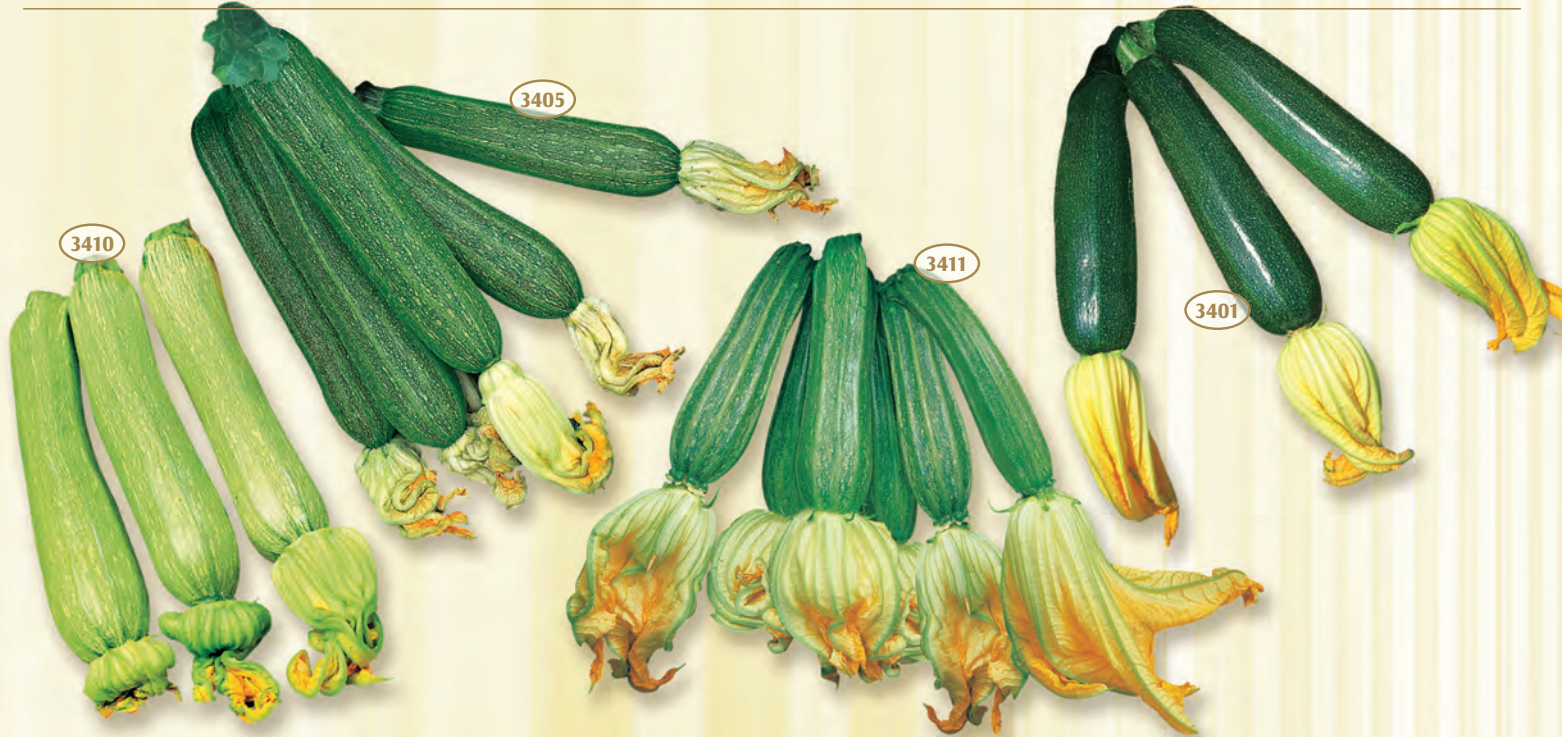
Spinach (*Espinacha oleracea*)

Code	Variety	Maturity	Plant type	Leaf colour	Leaf shape
1903	MATADOR	Early	Semi-erect	Medium green	Large, slightly blistered
1905	RICCIO AMERICA	Medium-late	Semi-erect	Dark green	Rounded, very blistering
1902	MERLO NERO	Mid-early	Semi-erect	Dark green	Large, blistered, thick
1906	GIANT OF WINTER	Early	Spreading	Medium green	Large, lance-shaped
1907	VIROFLAY	Early	Semi-erect	Light green	Lance-shaped, smooth
1910	LORELAY	Late	Erect	Dark green	Rounded, elongated

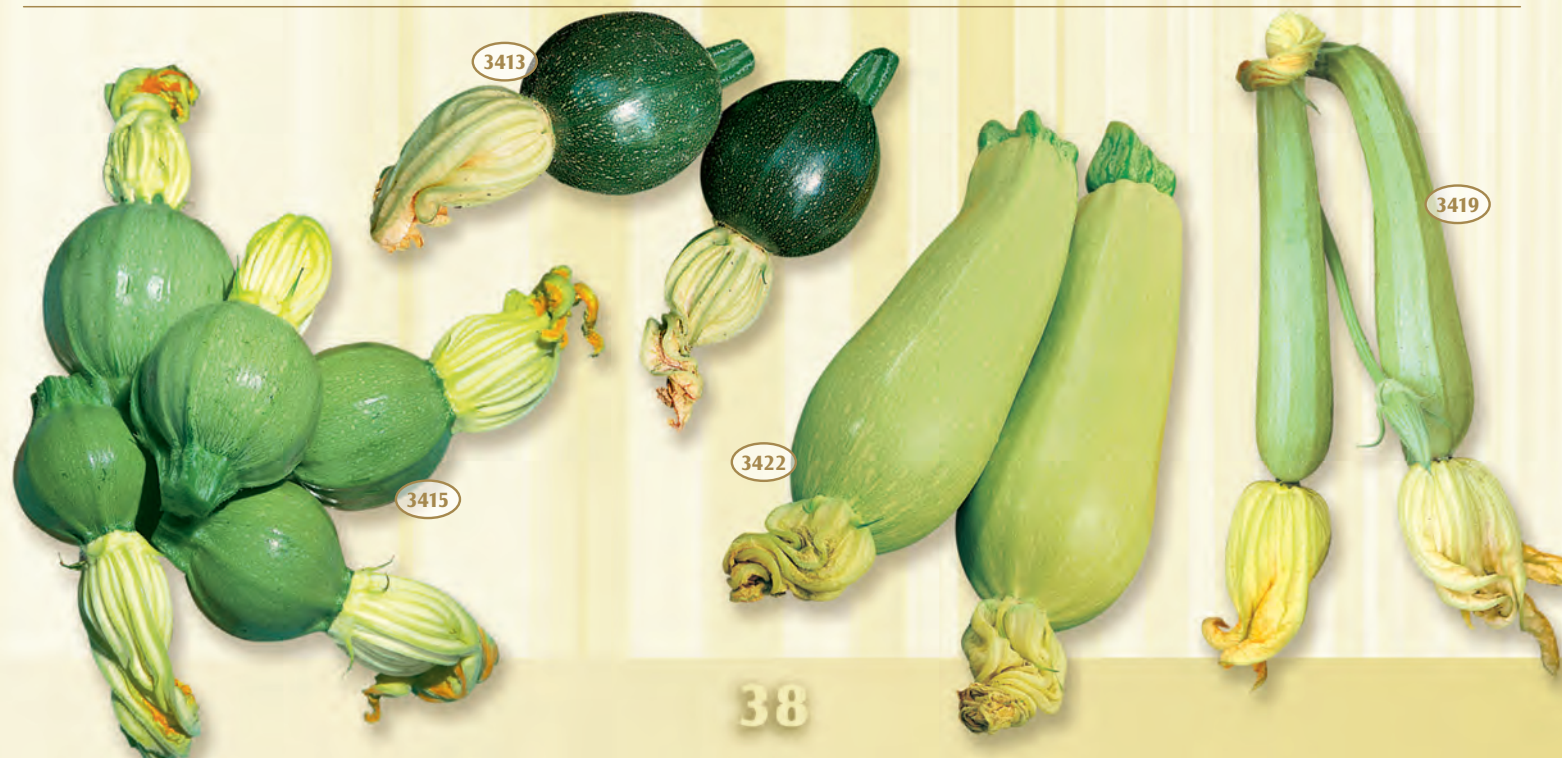


Squash (Cucurbita pepo)

Code	Variety	Maturity	Length cm.	Colour	Shape	Plant
3401	BLACK BEAUTY sel. DARK FOG	Mid-early	18-20	Dark green	Cylindrical	Erect, open
3405	STRIATO D'ITALIA sel. COMET	Mid-early	22-24	Light mottled green	Cylindrical	Large bush, open
3410	GENOVESE sel. CRISTOFORO	Early	17-19	Light mottled greysh-green	Cylindrical	Large bush, open
3411	ROMANESCO sel. MARZIO	Mid-late	17-18	Light mottled green	Cylindrical	Large bush, open



Code	Variety	Maturity	Length cm.	Colour	Shape	Plant
3413	TONDO SCURO DI PIACENZA	Mid-early	5-8	Dark green	Round	Open, vigorous
3415	ROUND OF NICE	Early	5-8	Greysh green	Round	Open, vigorous
3419	WHITE LONG SQUASH	Mid-late	23-25	Creamy-white	Club shaped	Open, vigorous
3422	BIANCO DI TRIESTE	Early	16-17	Creamy-white	Club shaped	Open



Swiss Chard (*Beta vulgaris vulgaris*)

Code	Variety	Leaf colour	Blistering	Length	Rib colour	Breadth cm.
1700	BIONDA DA TAGLIO A FOGLIA LISCIA sel. BLOND	Blond	Slight	Medium short	Straw yellow	1-2
1702	VERDE DA TAGLIO (Erbette) sel. GATOR	Dark green	Slight	Long	Light green	1-2
1704	LUKULLUS	Blond	Marked	Long	White	3-4
1720	LARGE RIBBED DARK GREEN 3 sel. VIRGO	Bright green	Medium	Long	Silver	8-10
1723	VERDE A COSTA CANDIDA	Bright green	Medium	Long	Silver	5-6
1724	FORDHOOK GIANT	Dark green	Marked	Medium	Silver	8-10
1725	BIONDA A COSTA ARGENTATA DI LIONE	Blond	Absent	Medium	Straw yellow	8-10
1726	VERDE A COSTA BIANCA BARESE	Dark green	Medium	Compact	Silver	6-8
1730	RHUBARB CHARD	Greeny purple	Medium	Medium	Ruby-red	3-4



Tomato (*Lycopersicon lycopersicum*)

Code	Variety	Maturity	Plant habit	Fruit shape	Weight in gr.	Use
2601	SAN MARZANO	Mid-early	Indeterminate	Square, elongated	80	Processing
2606	SAN MARZANO GIGANTE	Mid-late	Indeterminate	Square, elongated	100-130	Processing
2602	MARMANDE	Very early	Semi-determinate	Flattened	150-200	Fresh market
2604	CUOR DI BUE	Late	Indeterminate	Heart-shaped	200	Fresh market
2621	ACE 55 VF	Late	Determinate	Round	180	Fresh market
2608	PRINCIPE BORGHESE	Early	Indeterminate	Small, egg-shaped	50	Fresh market
2612	UC 82	Early	Determinate	Oval	70	Processing
2603	ROMA VF	Mid-early	Determinate	Pear-shaped	60-70	Processing
2607	RIO GRANDE	Mid-early	Determinate	Square	90	Processing
2646	CHICO III	Early	Determinate	Pear-shaped	65	Processing
2626	CAL J	Mid-late	Determinate	Square	90	Processing
2648	PICO DE ANETO	Mid-late	Determinate	Oval	75	Processing
2642	ARIZONA	Mid-late	Determinate	Prism shaped	140	Fresh market
2645	RED STAR	Mid-late	Determinate	Square	85	Processing
2643	INTERPEEL	Mid-early	Determinate	Prism shaped	70	Processing
2625	TITANO SUPER	Mid-early	Determinate	Prism shaped	65	Processing

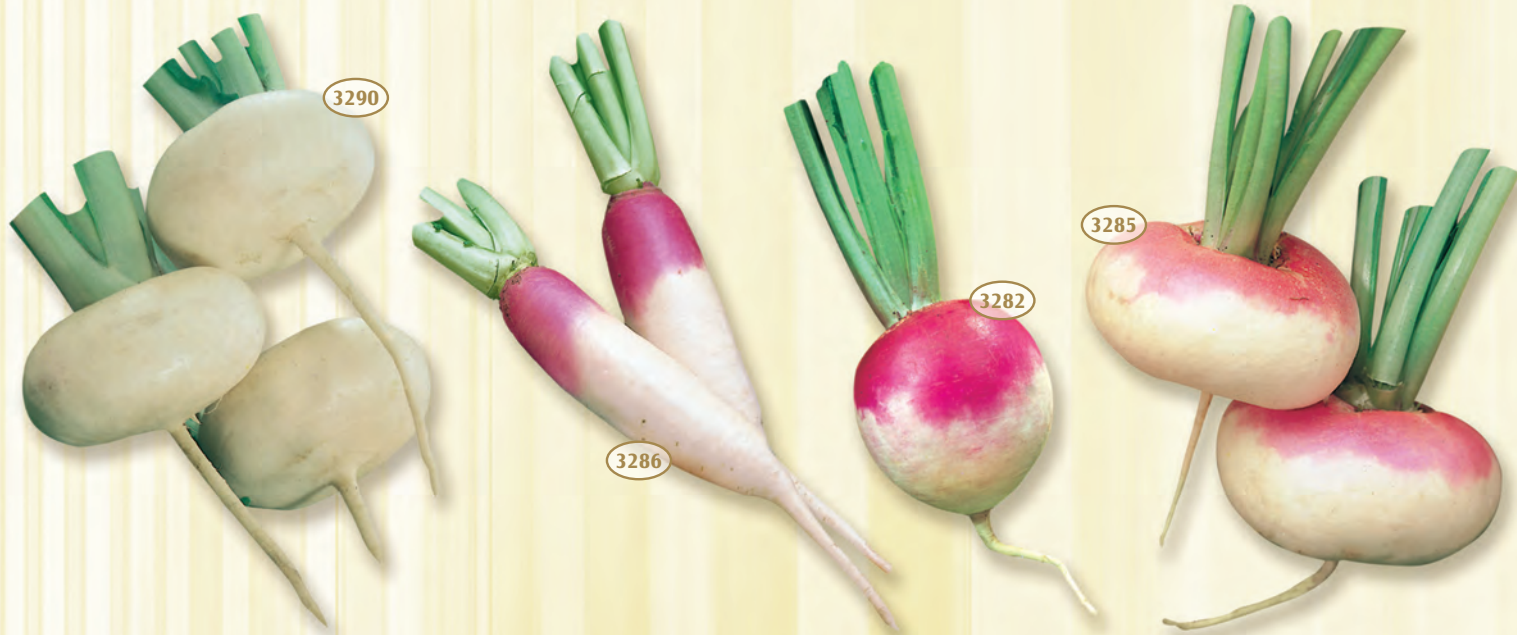
Watermelon (*Citrullus lanatus*)

Code	Variety	Maturity	Shape	Weight kg.	Rind colour	Flesh colour
4201	CRIMSON SWEET	Mid-early	Round oval	10-12	Green with dark veins	Deep red
4202	SUGAR BABY	Early	Round	4-6	Dark green	Bright red
4203	CHARLESTON GREY	Late	Oblong	10-15	Light green with dark veins	Bright red



Turnip (*Brassica rapa rapa*)

Code	Variety	Maturity	Foliage	Margin	Root shape	Colour
3282	WHITE GLOBE PURPLE TOP	Mid-late	Vigorous	Notched	Globe large	White with purple top
3285	PURPLE TOP MILAN sel. IDEAL	Mid-early	Short	Notched	Flat, medium size	White with purple top
3286	1/2 LUNGA COLLETTA VIOLA	Mid-early	Vigorous	Notched	Cylindrical	White with purple top
3290	BIANCA PIATTA 40°	Mid-early	Moderate	Entire	Entire	White



Code	Variety	Maturity	Foliage	Margin	Root shape	Colour
3293	SNOWBALL	Mid-early	Vigorous	Notched	Round	White
3291	VERTUS	Mid-early	Moderate	Notched	Cylindrical with large point	White
3295	ROSSA PIATTA FOGLIA INTERA	Mid-early	Moderate	Entire	Flat, medium sized	White with purple top



Sprouting Seed produced by Conventional and Organic Farming

Nome botanico	Italiano	English
Medicago Sativa L.	Erba Medica	Alfa Alfa
Ocimum Basilicum L.	Basilico	Basil
Sinapsis Nigra/Brassica nigra	Senape Nera	Black Mustard
Brassica Oleracea L.	Broccoli	Broccoli Calabrese
Brassica Rapa Cimosa	Cima di Rapa	Broccoli Rab-Rapini
Daucus Carota L.	Carota	Carrot
Cichorium intibus	Cicoria	Chicory
Brassica Pekinesis Camp	Cavolo Cinese	Chinese Cabbage
Alium Tuberosum	Porro Cinese	Chinese Leek
Valerianella Locusta L.	Valeriana	Corn Salad
Lipidium Sativum	Crescione	Cress
Anethum Graveolens	Aneto	Dill
Cichorium Endivia	Indivia	Endive
Foeniculum Vulgare	Finocchio	Fennel
Brassica Oleracea Acephala	Cavolo Rapa Rosso	Kohlrabi Red
Alium porrum	Porro	Leek
Alium Cepa	Cipolla	Onion
Pisum Sativum	Pisello	Pea
Raphanus Sativus M.	Ravanello Giapp.	Radish Daikon
Beta Vulgaris Esculenta	Bieta da Orto	Red Beet
Brassica Oleracea L.	Cavolo Rosso	Red Cabbage
Raphanus Sativus L.	Ravanello Rosso	Red Radish
Beta Vulgaris Cycla	Bieta Costa Rossa	Red Swiss Chard
Eruca Sativa	Rucola	Rocket
Glicine Soja	Soia	Soy Bean
Heliantus Annuus	Girasole	Sunflowers
Brassica Camp. Parachinensis	Tatsoi	Tatsoi
Brassica Rapa L.	Rapa	Turnip
Brassica Oleracea L.	Cavolo Bianco	White Cabbage
Diplotaxis Eurocoides	Rucola Selvatica	Wild Rocket
Sinapsis Alba/Brassica Hirta	Senape Bianca	Yellow/White Mustard



We grow more than 300 different varieties from our stock seed and many of them can be used for sprouting purposes. In particular, we would like to draw your attention on the production of the true, original variety of Broccolo Calabrese grown for centuries in the Calabria region. Beside this and not less important, we offer coloured sprouts varieties like red radish, red cabbage and red kohlrabi, and many others more like the typical Italian varieties of basil, rapini, chicories and rocket.



Mediterranea®

seeds of tradition

"Organic Seeds"

"Seed production is our job, good seed production is our goal".

Thanks to its heirloom seed line "Mediterranea®", Anseme got a great familiarity with the production of all those typical varieties that people of Mediterranean countries have been growing for ages. Our major concern is keeping the purity of these varieties so rich of history and tradition. What we are now offering you are the true native varieties bearing the real colours and tastes of Mediterranean cooking.

In 1998 then, in order to get our seed production the most specialised, we also started producing many of the above varieties by organic methods. Our organic seed production company status is certified by I.M.C. (which also is recognised worldwide by INFOAM) and our ID number is IT IMC G312 - T000215.

Species	Species	Species
Basil Italiano classico (Type Genovese) Sel. Aurelio	Fennel Mantovano	Radish Saxa Sel. Perla rossa
Swiss Chard large Ribbed Dark Green 3	Endivie Escarole Pancalieri White Ribs Sel. Grado	Radish Red Round Small White Tip 3
Red Beet Detroit 2	Endivie Escarole Broad Batavian Full Heart Sel. Metaponto	Rocket Cultivated Sel. Vittoria
Carrot Nantes 2	Butterhead Lettuce Winter Crop Sel. Giorgia	Rocket Wild Sel. Ricca
Carrot Flakkee 2 Sel. Francy	Butterhead Lettuce Red Marvel 4 Seasons	Spinach Giant of Winter
Broccoli Green Sprouting Calabrese	Butterhead Lettuce K.S. 2 Sel. Torenia	Spinach Matador
Cucumber Green Marketmore 70	Butterhead Lettuce May King Sel. Danica	Spinach Riccio Giant of America
Chicory Red Palla Rossa n.3	Crisphead Lettuce Ice Queen Sel. Tonale	Squash Black Beauty Sel. Dark Fog
Chicory Green Grumolo Verde Scuro Sel. Doris	Leaf Lettuce Bionda a Foglia Riccia Sel. Giuliano	Herb coriander Coriandrum sativum
Chicory Green Spadona Verde	Peas (Half-Climbing) Rondo Sel. Argos	Herb majoran Origaum majorana
Chicory Catalogna Catalogna Frastagliata Sel. Ischia	Peas (Half-Climbing) Progress 9	Herb lemon Balm Melissa officinalis
Onion Yellow of Parma	Leek Carentan	Herb peppermint Mentha piperita
Cress Plain - Lepidium Sativum	Parsley Plain 2	Herb origanum Origanum vulgare
Broad beans Superaguadulce	Parsley Giant of Italy	Herb summer savory Santureja hortensis
Fennel Romanesco	Radish Giant of Sicily Sel. Gioia	Herb Dandelion Taraxacum officinale



Index

Inglese	Italiano	Francese	Spagnolo	Tedesco	Latino	Pag.
Multiplication list						2
Artichoke	Carciofo	Artichaut	Alcachofa	Artischocke	Cynara scolymus	3
Asparagus	Asparago	Asperge	Espárrago	Spargel	Asparagus officinalis	3
Basil	Basilico	Basilic	Albahaca	Basilikum	Ocimum basilicum	3
Bean	Fagiolo	Haricot	Judía/Poroto	Bohne	Phaseolus vulgaris	4
Red beet	Bietala da orto	Betterave potagère	Remolacha de mesa	Rote Rübe	Beta vulgaris conditiva	6
Broad bean	Fava	Fève	Haba	Dicke bohne	Vicia faba	6
Broccoli	Broccolo	Chou-broccoli	Brócoli	Brokkoli	Brassica oleracea cymosa	8
8Brussel sprouts	Cavolo di Bruxelles	Chou de Bruxelles	Col de Bruselas	Rosenkohl	Brassica oleracea gemmifera	8
Cabbage	Cavolo	Chou	Col repollo	Kohl	Brassica oleracea alba	8
Curly Kale	Cavolo riccio	Chou frisé	Col crespia	Kraus Kohl	Brassica oleracea sabellicas	8
Savoy cabbage	Cavolo verza	Chou de Milan	Col de Milan	Wirsingkohl	Brassica oleracea sabauda	9
Kohlrabi	Cavolo rapa	Chou rave	Col rábano	Kohlrabi	Brassica oleracea gongyloides	9
Chinese cabbage	Cavolo cinese	Chou Chinois	Col China	Chinakohl	Brassica pekinensis	9
Cauliflower	Cavolfiore	Chou-fleur	Coliflor	Blumenkohl	Brassica oleracea botrytis	9
Cardoon	Cardo	Cardon	Cardo	Cardy	Cynara cardunculus	10
Carrot	Carota	Carotte	Zanahoria	Möhren	Daucus carota	11
Celery	Sedano	Célieri	Apio	Sellerie	Apium graveolens	12
Celeriac	Sedano rapa	Célieri rave	Apio Nabo	Sellerie	Apium graveolens	12
Coriander	Coriandolo	Coriandre	Cilantro	Koriander	Coriandrum sativum	12
Chicory	Cicoria	Chicorée sauvage	Achicoria	Zichorien	Cichorium intybus	13
Broccoli raab	Cima di rapa	Cima di rapa	Cima di rapa	Rübensproß	Brassica rapa cymosa	16
Corn Salad	Valeriana	Mâche	Lechuga canónigo	Feldsalat	Valerianella locusta	17
Cucumber	Cetriolo	Concombre	Pepino	Gurken	Cucumis sativus	17
Dill	Aneto	Aneth	Eneldo	Dill	Anethum graveolens	17
Egg plant	Melanzana	Aubergine	Berenjena	Aubergine/Eierfrucht	Solanum melongena	17
Endive	Endivia	Chicorée scarole	Escarola	Endivien	Chicorium endivia	18
Fennel	Finocchio	Fenouil	Hinojo	Fenchel	Foeniculum vulgare	19
Leek	Porro	Poireau	Puerro	Porree	Allium porrum	19
Herbs	Aromatiche	Aromatiques	Aromaticas	Küchenkräuter		20
Lettuce	Lattuga	Laitue	Lechuga	Salate	Lactuca sativa	22
Melon	Melone	Melon	Mélon	Melone	Cucumis melo	25
Onion	Cipolla	Oignon	Cebolla	Zwiebel	Allium cepa	26
Parsley	Prezzemolo	Persil	Perejil	Petersilie	Petroselinum crispum	28
Pea	Pisello	Pois	Guisante/Arveja	Erbsen	Pisum sativum	29
Pepper	Peperone	Poivron	Pimiento	Paprika	Capsicum annum	32
Pumkin	Zucca	Courge	Calabaza	Kürbis	Cucurbita maxima/moschata	32
Radish	Ravanello	Radis	Rabanito	Radies	Raphanus sativus	34
Winter radish	Ramolaccio	Radis	Rábano	Rettich	Raphanus sativus	36
Rocket	Rucola	Roquette	Rúcula	Rauke	Eruca sativa/Diplotaxis erucoides	36
Spinach	Spinacio	Epinard	Espinaca	Spinat	Spinacia oleracea	37
Squash	Zucchini	Courgette	Calabacín	Zucchini	Cucurbita pepo	38
Swiss chard	Bieta	Poirée	Acelga	Mangold	Beta vulgaris vulgaris	39
Tomato	Pomodoro	Tomate	Tomate	Tomaten	Lycopersicon lycopersicum	40
Watermelon	Anguria	Pastèque	Sandía	Wassermelone	Citrullus lanatus	40
Turnip	Rapa	Navet	Nabo	Mairübe/Herbstrübe	Brassica rapa rapa	41
Sprouting	Germogli	Graines pour germes	Brotes	Sprossen		42
Organic	Biologico	Biologique	Biológico	Bio		43



anseme

Seed Production



ANSEME Spa

Via Cipro, 60 - 47023 CESENA (FC) ITALY - Tel. +38 0547 382121 Fax 0547 384451
e-mail: anseme@anseme.com <http://www.anseme.com>